

---

# Herbicide Use in Hybrid Rice

Brian Ottis  
RiceTec, Inc.

# Topics for Discussion

---

- Herbicide use in conventional hybrids
- Herbicide use in CLEARFIELD hybrids
  - Newpath label changes
  - Beyond timing
  - Tank mixes and adjuvants
  - A little philosophy.....

# Herbicide Use in Conventional Hybrids

---

- Manage similarly to conventional varieties
  - Stressful conditions in association with Command may lead to early-season injury
    - Split applications of Command becoming popular in approved tank mixtures
  - Unless final plant stands are reduced below 3-5 plants/sq ft, yield reductions are not a concern
  - 100 lb AMS or DAP followed by flush

# Herbicide Use in CLEARFIELD Hybrids

---

- Newpath label changes for 2009
  - 6 oz fb 6 oz has been approved for CL Hybrids
- Soil moisture is more important than Newpath rate (Sciumbato et al. 2003).

# 2008 Newpath Trials\*

Newpath fb.

Newpath/

Beyond

	CLXL745	CLXL729	CLXL730	CLXP746	CL161	CL171
Zero Check	234 a	194 b	194 b	208 a	169 a	157 a
4oz fb 4oz	239 a	221 a	208 a b	224 a	172 a	165 a
8oz fb 8oz	225 a	205 a b	201 a b	216 a	173 a	158 a
12oz fb 12oz	232 a	201 a b	205 a b	214 a	167 a	167 a
4oz fb 6oz	241 a	213 a b	217 a	224 a	183 a	157 a
8oz fb 12oz	240 a	199 a b	208 a b	218 a	170 a	160 a
12oz fb 18oz	230 a	198 a b	198 a b	209 a	172 a	156 a
LSD	22	24	18	23	17	21

\*5 Locations

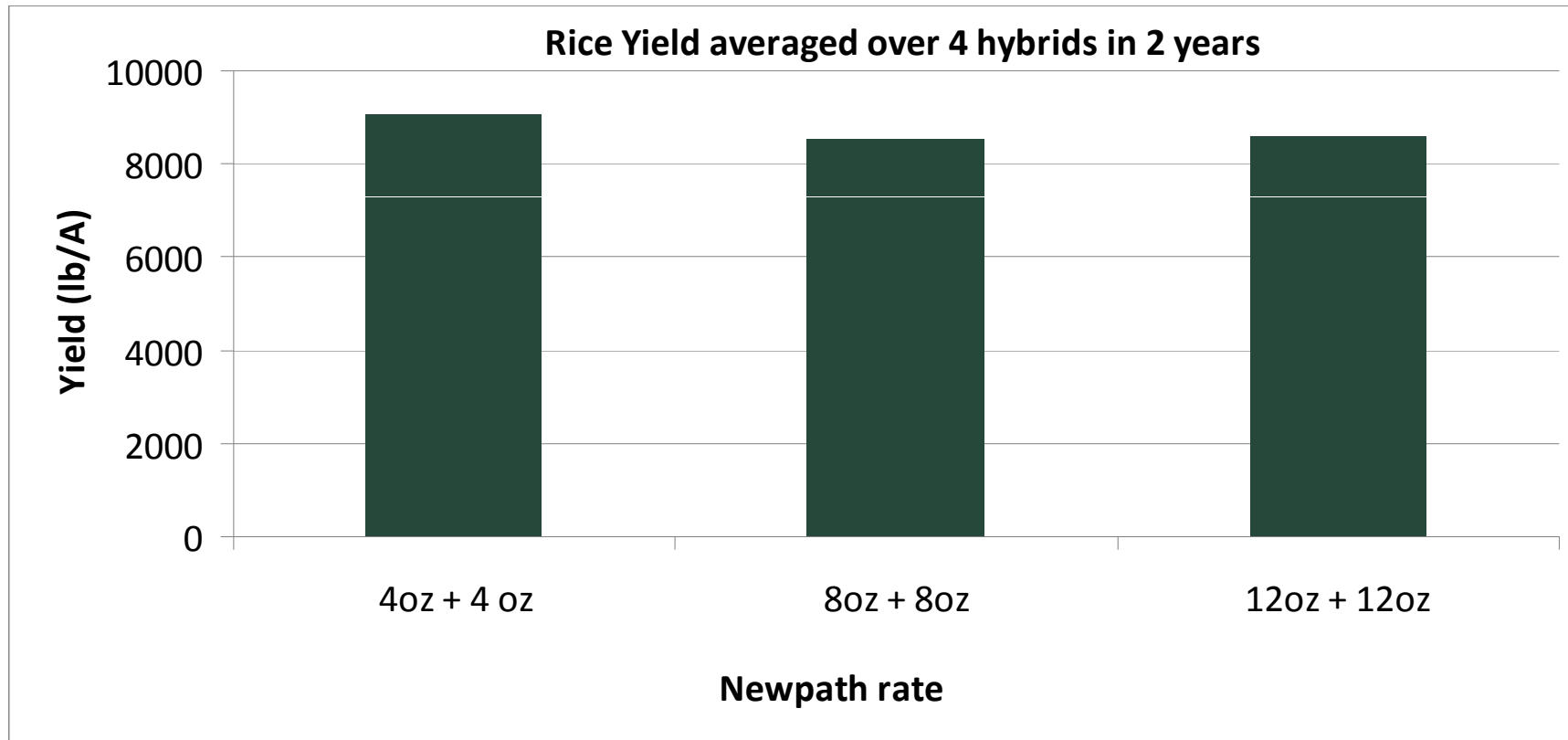
# Conventional Herbicides Following 4 oz Newpath\*

	CLXL745	CLXL729	CLXP746
<b>WEED-FREE CHECK</b>	<b>217.4</b>	<b>226.9</b>	<b>238.9</b>
<b>CLINCHER 15OZ +</b>	<b>210.2</b>	<b>238.4</b>	<b>240.3</b>
<b>CLINCHER 30OZ</b>	<b>216.7</b>	<b>244.5</b>	<b>226.1</b>
<b>GRANDSTAND 1PT</b>	<b>247.1</b>	<b>228.8</b>	<b>233.9</b>
<b>GRANDSTAND 2PT</b>	<b>222.1</b>	<b>230.7</b>	<b>219.9</b>
<b>REGIMENT 0.67OZ</b>	<b>235.1</b>	<b>228.4</b>	<b>239.0</b>
<b>REGIMENT 1.34 OZ</b>	<b>256.8</b>	<b>237.9</b>	<b>237.5</b>
<b>RICESTAR 24OZ</b>	<b>227.1</b>	<b>240.2</b>	<b>232.4</b>
<b>RICESTAR 48OZ</b>	<b>235.4</b>	<b>230.2</b>	<b>248.2</b>
<b>LSD</b>	<b>39.1</b>	<b>26.5</b>	<b>13.5</b>
<b>CV</b>	<b>8.9</b>	<b>5.4</b>	<b>4.4</b>

\* Newpath applications made at 1-2 LF

+ Applications made at 4-5 LF

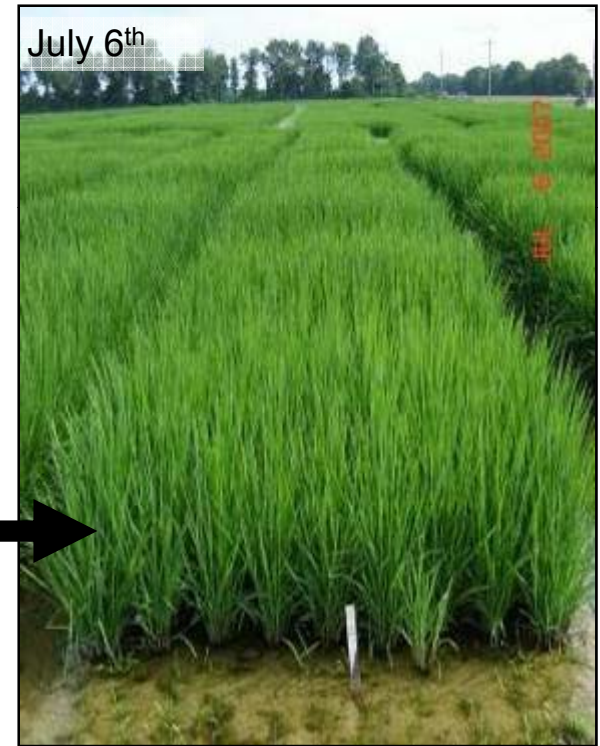
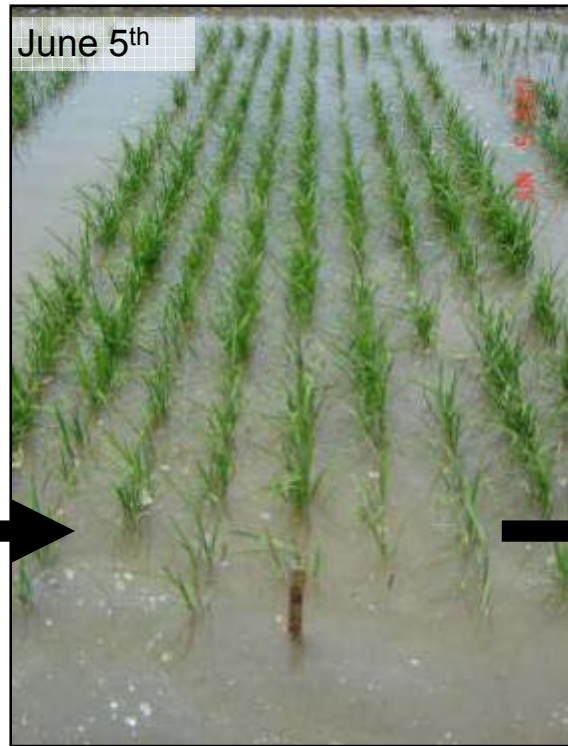
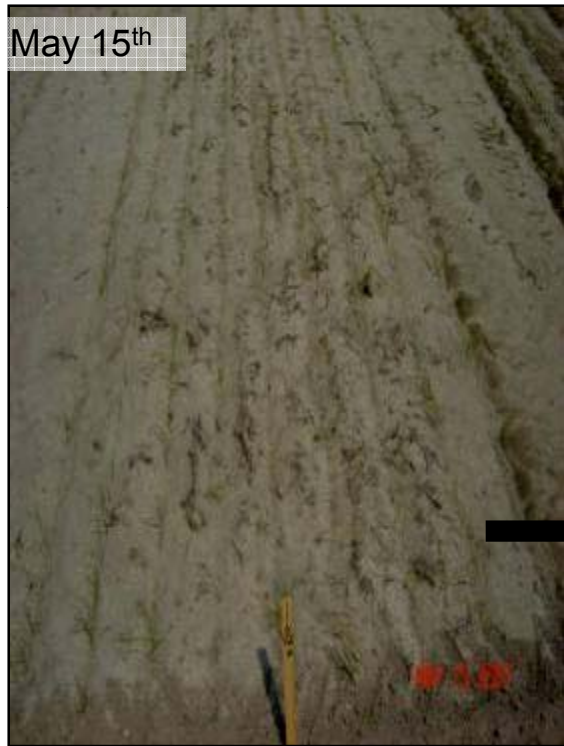
# Hybrid Tolerance to Newpath



# Response to Newpath is possible...

---

CLEARFIELD XL745: 12oz/A at 1-2 leaf fb 12oz/A at 4-5 leaf



# Beyond use in CLEARFIELD Hybrids

---

- Apply after two 4-6 oz/A Newpath applications
  - Apply 5 oz/A with 1% COC or 0.25% NIS up to panicle initiation (PI or ½ IE) stage
  - If going to flood and red rice control is suspect, plan on spraying Beyond within 2 weeks
  - Spot spray
  - Remove red rice by hand if necessary

# 2008 Beyond Trials\*

Following 2-4 oz Newpath applications

Beyond Rate & Timing	CLXL745	CLXL729	CLXP746	CL161
Zero Check	221 a	196 a b c	203 a b c	168 a b
5 Leaf 4oz	225 a	211 a	213 a b	176 a
5 Leaf 6oz	214 a b	208 a b	215 a b	173 a b
5 Leaf 12oz	219 a b	199 a b c	210 a b	169 a b
PI 4oz	212 a b c	200 a b	216 a	167 a b
PI 6oz	223 a	201 a b	212 a b	171 a b
PI 12oz	214 a b	189 b c	203 a b c	170 a b
PI+7 4oz	208 a b c d	192 a b c	210 a b	167 a b
PI+7 6oz	206 a b c d e	188 b c	190 c d e	169 a b
PI+7 12oz	197 b c d e	165 d e	173 e f	169 a b
PI+14 4oz	203 a b c d e	189 b c	198 b c d	163 a b
PI+14 6oz	204 a b c d e	178 c	184 d e	165 a b
PI+14 12oz	183 e	163 d	156 f g	164 a b
Boot 4oz	188 d e	161 d	162 f g	168 a b
Boot 6oz	190 c d e	148 e	149 g	166 a b
Boot 12oz	165 f	103 f	107 h	155 b
<b>LSD</b>	24	21	17	19

# Resistance Management in CLEARFIELD Rice

---

- Read the label(s)
- Use other MOA's in sequential applications or tank mixes
- Propanil is still a good herbicide
  - Great partner with Newpath
- Use approved adjuvants and proper spray volume



2.5 oz Grasp + 4 oz Newpath + 1  
qt MSO 3-4 lf

no-till

cool and wet



# A Little Philosophy....

- We must learn to manage resistance
- New technology will help, but it will not ‘save the day.’
- If you can’t manage it now, how will you manage it later???

# Questions?

---

## Louisiana RiceTec Sales and Service Team

### South and Central Louisiana

**Mike Worthington – District  
Sales 337.263.4297**

**Cullen Minter – Technical  
Services 337.499.6498**

### North Louisiana

**Jeff Mosley – District Sales  
662.719.1034**

**Jay Burchfield – Technical  
Services  
662.402.2781**